



August 12, 2006

Michigan



August 12, 2006

Michigan Conservation:



August 12, 2006

Michigan Conservation:

Where Do We Go



August 12, 2006

Michigan Conservation:

Where Do We Go
From Here?



August 12, 2006

Michigan's Conservation History

Michigan's Conservation History

- A story of 'Ruin and Recovery'

Michigan's Conservation History

- A story of 'Ruin and Recovery'
- Citizen action has played decisive role

Michigan's Conservation History

- A story of 'Ruin and Recovery'
- Citizen action has played decisive role
- Vision to action

Conservation vs. Environment

The background is a solid blue color. A white arc starts from the top left and curves towards the right. A light blue, semi-transparent shape is positioned on the right side, overlapping the white arc and the blue background.

Conservation vs. Environment

- Conservation
 - Assuring resources are left for the future
 - Same root word as “conservative”

Conservation vs. Environment

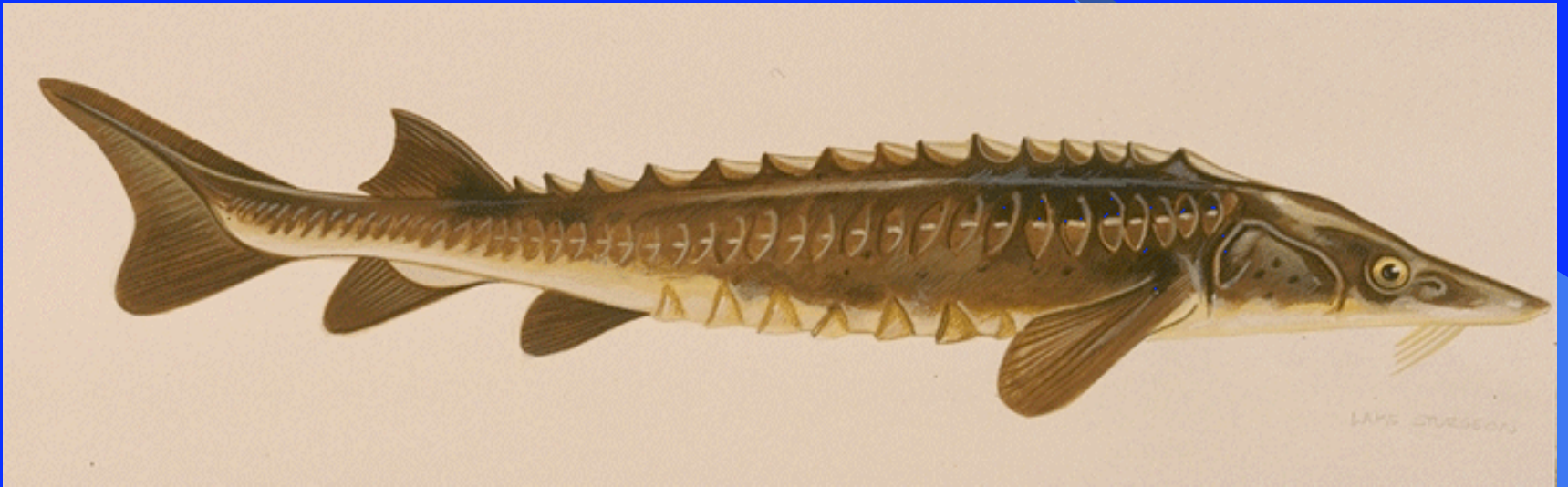
- Conservation
 - Assuring resources are left for the future
 - Same root word as “conservative”
- Environment
 - Surroundings
 - “Greenpeace”





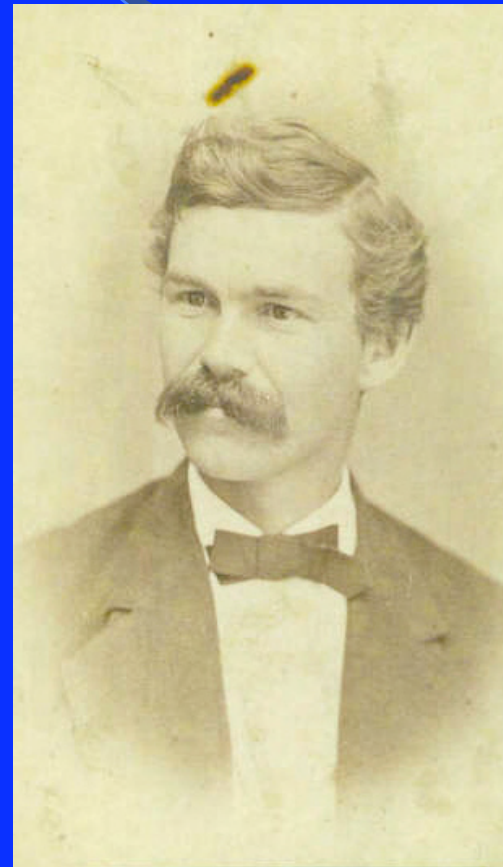






Charles Garfield, Forestry Pioneer

“Some time it may be, our state shall be so ruled by men of vision and men of taste...to renew its waste places with forest life – to make this peninsula, which is bound to shelter 10,000,000 of people, as beautiful as God intended it to be.” (1900)



Genevieve Gillette, Parks Protector



“In the sixty years that I have been on the scene I’ve seen outdoors recreation grow from a few people in double buggies to multitudes of people in millions and millions of cars. I’m satisfied it won’t stop when we do.”

James Oliver Curwood, Crusader for Conservation



Conservation will soon “be recognized as the most vital problem in our existence, for so overwhelming has man’s power become...and so terribly has he already upset nature's balance that, unless he halts immediately, ruin and desolation lie ahead of him.” (1927)

What's Your Vision?

What's Your Vision?

- 100 years from now

What's Your Vision?

- 100 years from now
- What will Michigan look like?

What's Your Vision?

- 100 years from now
- What will Michigan look like?
- What *should* Michigan look like?

What's Your Vision?

- 100 years from now
- What will Michigan look like?
- What *should* Michigan look like?
- How do we get there?

In the Beginning

The image features a solid blue background. A white arc starts from the top left and curves towards the right. A light blue wedge-shaped area is positioned on the right side, pointing towards the center of the arc.

In the Beginning

- Michigan becomes state in 1837

In the Beginning

- Michigan becomes state in 1837
- Over 90% of the state forested

In the Beginning

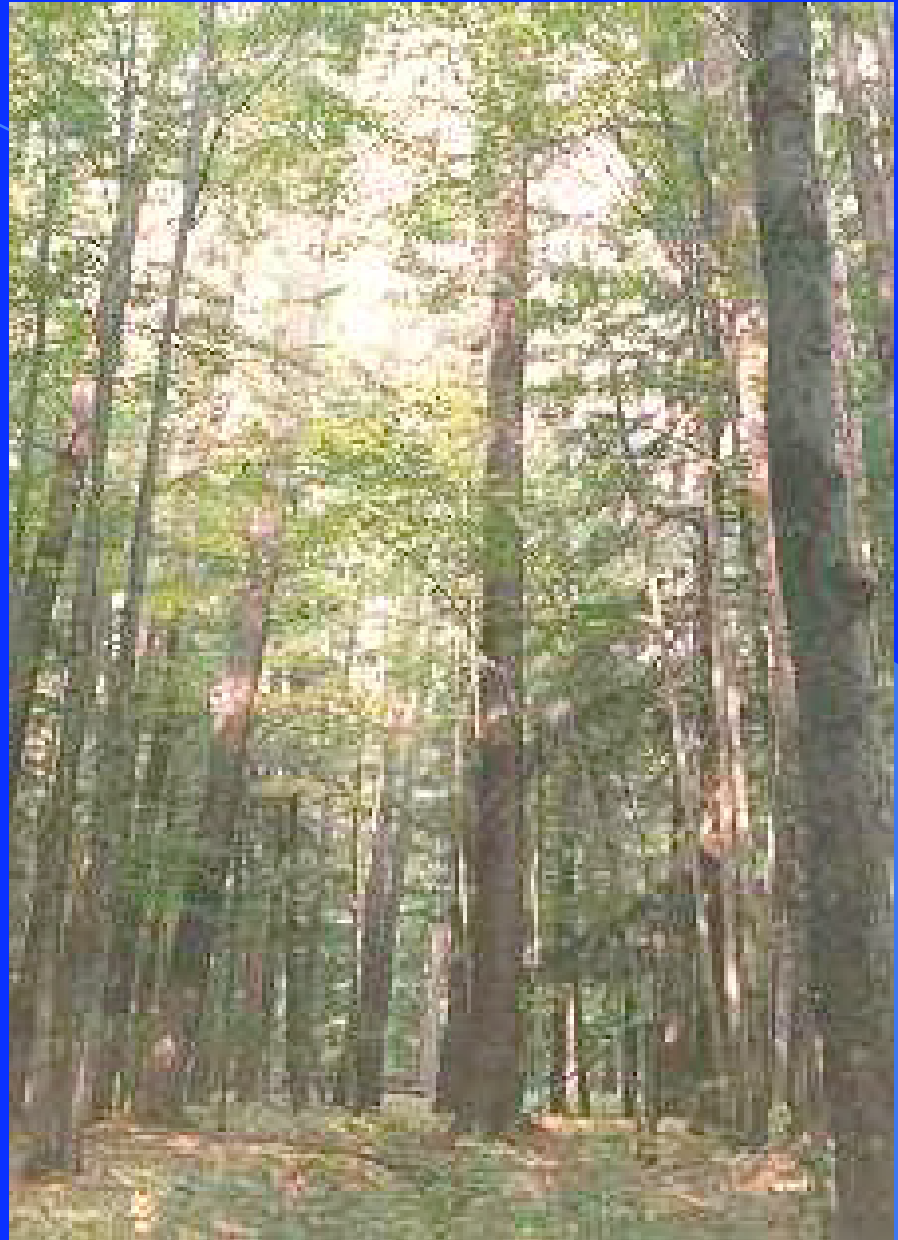
- Michigan becomes state in 1837
- Over 90% of the state forested
- 11 million acres of wetlands
(5.5 million acres in 2003)

In the Beginning

- Michigan becomes state in 1837
- Over 90% of the state forested
- 11 million acres of wetlands
(5.5 million acres in 2003)
- Elk, grayling, wolves, passenger pigeon

“...The forest trees seem to form a single whole, an immense and indestructible edifice, under whose vaults reigns an eternal darkness.”

-- Tocqueville,
1831



The Myth of Inexhaustibility

The background is a solid blue color. A white arc starts from the top left and curves towards the right. A light blue wedge-shaped area is located in the bottom right corner, pointing towards the center.

The Myth of Inexhaustibility

- 1800s: Timber so plentiful it will last for centuries

The Myth of Inexhaustibility

- 1800s: Timber so plentiful it will last for centuries
- 1900s: Great Lakes so massive they can't be overpolluted

The Myth of Inexhaustibility

- 1800s: Timber so plentiful it will last for centuries
- 1900s: Great Lakes so massive they can't be overpolluted
- 2006: So much land we can continue to sprawl indefinitely



1800s Timber Boom



1800s Timber Boom

- Michigan led nation in timber production 1870–1890

1800s Timber Boom

- Michigan led nation in timber production 1870–1890
- Timber harvest rebuilt Chicago, supplied Nebraska, Kansas, Wyoming

1800s Timber Boom

- Michigan led nation in timber production 1870–1890
- Timber harvest rebuilt Chicago, supplied Nebraska, Kansas, Wyoming
- \$3 billion in 1929 dollars

1800s Timber Boom

- Michigan led nation in timber production 1870–1890
- Timber harvest rebuilt Chicago, supplied Nebraska, Kansas, Wyoming
- \$3 billion in 1929 dollars
- 92% of native forest logged





Warnings of Disaster

The background is a solid blue color. A white curved line starts from the top left and curves towards the right. A light blue curved shape is positioned on the right side, partially overlapping the white line.

Warnings of Disaster

- Michigan: peak lumber producing state in 1870–1890

Warnings of Disaster

- Michigan: peak lumber producing state in 1870–1890

Warnings of Disaster

- Michigan: peak lumber producing state in 1870–1890
- North American Review, 1868: “The most sanguine calculation cannot carry the [Michigan] lumber business beyond the present century.”





The Rise of Conservation



The Rise of Conservation

- Michigan Sportsman's Association, 1875



The Rise of Conservation

- Michigan Sportsman's Association, 1875
- Lobbies for first paid state game warden position in country, 1887



The Rise of Conservation

- Michigan Sportsman's Association, 1875
- Lobbies for first paid state game warden position in country, 1887



Chase Osborn:

The Rise of Conservation

- Michigan Sportsman's Association, 1875
- Lobbies for first paid state game warden position in country, 1887



Chase Osborn:
Game Warden and
Later Governor

The Rise of Forestry

- Robert Kedzie, legislator, early faculty member of MAC
- Charles Garfield, legislator and ardent forestry proponent



James Oliver Curwood's Crusade



- Shut down game seasons on many species
- Tough conservation law enforcement
- Expose “corruption” in Department of Conservation

Curwood's Legacy

Curwood's Legacy

- Legislature gives citizen panel power to choose conservation director (1929)

Curwood's Legacy

- Legislature gives citizen panel power to choose conservation director (1929)
- Attack on commission led to formation MUCC in 1937

Curwood's Legacy

- Legislature gives citizen panel power to choose conservation director (1929)
- Attack on commission led to formation MUCC in 1937
- MUCC continues to fight to bar politics from fish, wildlife decisions

Two Great U.P. Conservation Wins



- Porcupine Mountains
- Estivant Pines

Porcupine Mountains



P.J. Hoffmaster

Porcupine Mountains

- 1925 park proposal



P.J. Hoffmaster

Porcupine Mountains

- 1925 park proposal
- “Largest virgin hardwood forest” eastern ½ of U.S.



P.J. Hoffmaster

Porcupine Mountains

- 1925 park proposal
- “Largest virgin hardwood forest” eastern ½ of U.S.
- “Startling in their infinite variety of cool, dense forests; breath-taking heights; roaring and rumbling waterfalls; and awe inspiring vistas...” (1943)



P.J. Hoffmaster

Porcupine Mountains



- Ironwood merchant, Raymond Dick
- Organizes national leaders for Porkies
- World War II timber demand looms
- Privately owned land to be logged

Aldo Leopold, May 1942:

Unlogged land in the Porcupines is “a symbol. It portrays a chapter in national history which we should not be allowed to forget. When we abolish the last sample of the Great Uncut, we are, in a sense, burning books...”

Outdoor America

Saving the Porcupines



- 1944: Gov. Harry Kelly asks \$5M
- 1945: Timber company seeks support War Production Board
- 1945: State condemns land

A Nationally Significant Win

Dorothea Kahn, *Christian Science Monitor*: "...[I]t is no exaggeration to say it is being done in the nick of time...The axes of lumbermen could be heard at the borders of the forest."

National Parks Magazine: "It is little short of a miracle to have succeeded in this endeavor in the

Porkies Saved *Three* Times

Porkies Saved *Three* Times

- 1945 land condemnation

Porkies Saved *Three* Times

- 1945 land condemnation
- 1958 gold mine proposal
 - Porcupine Mountains Wilderness Association
 - 85,000 stamps featuring Lake of the Clouds

Porkies Saved *Three* Times

- 1945 land condemnation
- 1958 gold mine proposal
 - Porcupine Mountains Wilderness Association
 - 85,000 stamps featuring Lake of the Clouds
- 1962 fish ladder on Presque Isle, etc.

Porkies Saved *Three* Times

- 1945 land condemnation
- 1958 gold mine proposal
 - Porcupine Mountains Wilderness Association
 - 85,000 stamps featuring Lake of the Clouds
- 1962 fish ladder on Presque Isle, etc.
- 1971: bulk of park dedicated as wilderness

Estivant Pines



- 1970: Calumet and Hecla begins logging
- Virgin white pine, many over 100' tall
- Lauri Leskinen: “act of sacrilege” to log
- Bertha Daubendiek, Michigan Nature Association

Estivant Pines Saved!

- Statewide fundraising campaign
- \$37,800 check to owners in August '73
- 200 acres saved including “Leaning Giant”



Conservation Gains



People of the PINES

They had loyalty, love and a little bit of luck



WRITER: CHLOE PHIBBS
PHOTOGRAPHER: OCEAN ROBERTS

Pine trees always tick, even in the quietest of forests. The old and weathered branches dominate the dense canopy, the still air swaying and the crunch of deadfall underfoot as you venture down the trails in Eastern Pointe National Sanctuary near Copper Harbor, Michigan.

The oldest living trees in Michigan - a virgin stand the likes of which can't be found anywhere else east of the Rockies - still share many traits dramatically from any forests ever will.

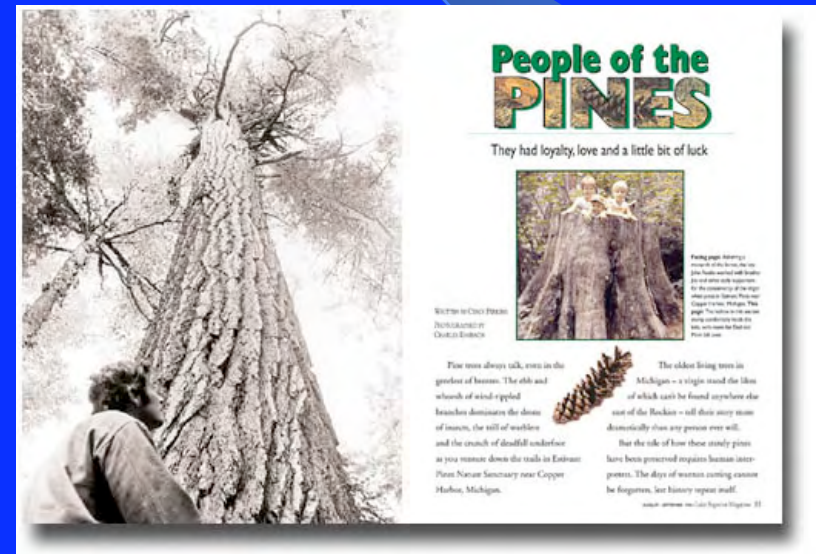
But the tale of how these steady giants have been preserved requires human intervention. The days of massive logging cannot be forgotten, but history repeats itself.

PHOTO COURTESY OF THE NATIONAL SYSTEMS DIVISION

PHOTOGRAPH BY OCEAN ROBERTS

Conservation Gains

- 35,000-acre forestry reserve created in 1901



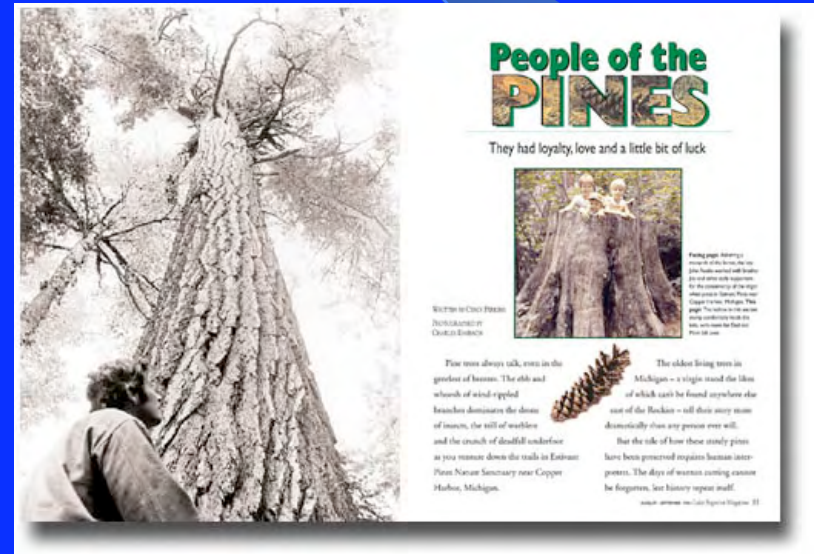
Conservation Gains

- 35,000-acre forestry reserve created in 1901
- 3.9 million acres today



Conservation Gains

- 35,000-acre forestry reserve created in 1901
- 3.9 million acres today
- First park, 1917



Conservation Gains

- 35,000-acre forestry reserve created in 1901
- 3.9 million acres today
- First park, 1917
- 96 state parks today



Champion of Parks: Genevieve Gillette



Champion of Parks: Genevieve Gillette



- In 1920s, began 50-year career boosting state parks

Champion of Parks: Genevieve Gillette



- In 1920s, began 50-year career boosting state parks
- “Loud and intimidating,” but lobbying not easy

Champion of Parks: Genevieve Gillette



- In 1920s, began 50-year career boosting state parks
- “Loud and intimidating,” but lobbying not easy
- Key in state park funding, Sleeping Bear Dunes

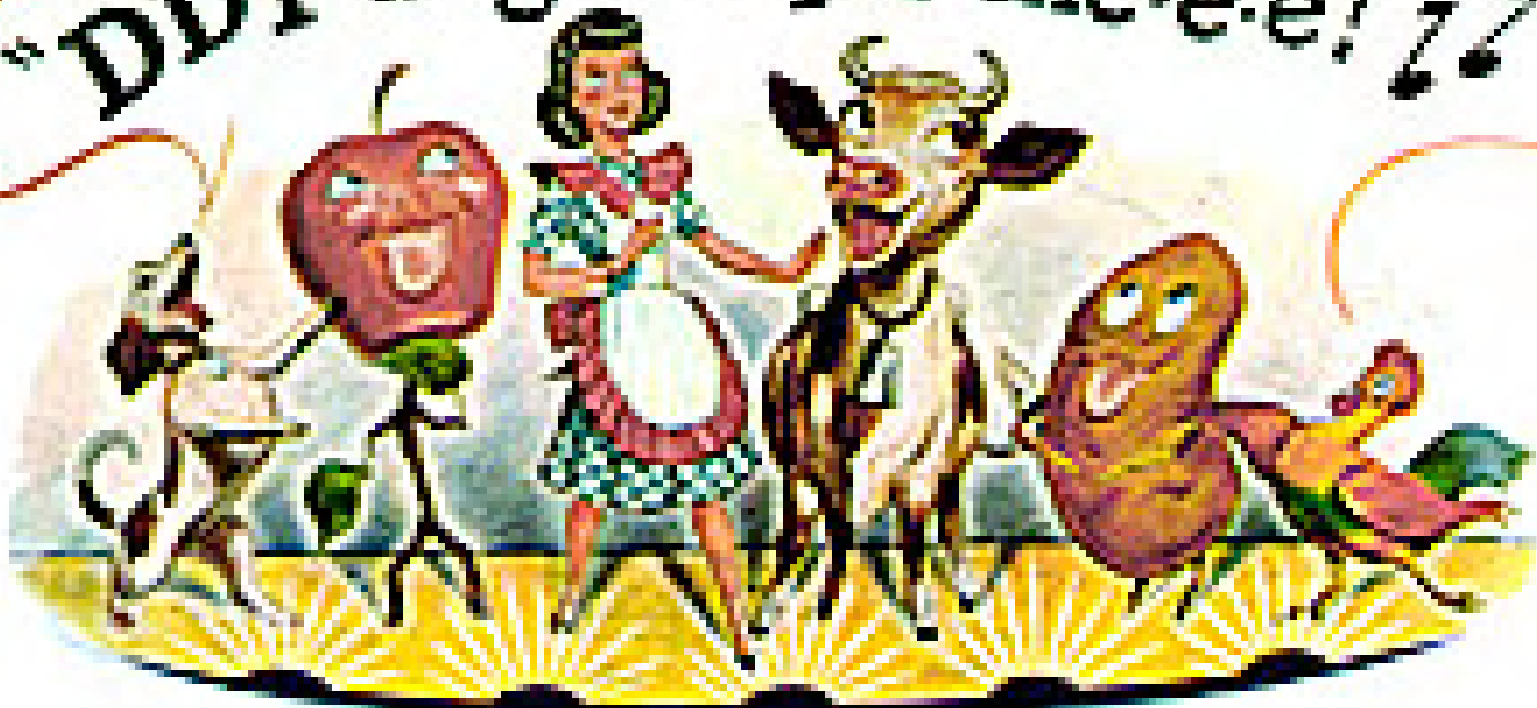




“Four Acres of Dead Carp on the
Kalamazoo,” Life magazine,
1953



"DDT is good for me-e-e!"/>"



Michigan and Silent Spring



Rachel Carson

Michigan and Silent Spring

- Rachel Carson described MSU robin deaths in 1962's classic *Silent Spring*



Rachel Carson

Michigan and Silent Spring

- Rachel Carson described MSU robin deaths in 1962's classic *Silent Spring*
- MSU's Wallace sounded alarm



Rachel Carson

Michigan and Silent Spring

- Rachel Carson described MSU robin deaths in 1962's classic Silent Spring
- MSU's Wallace sounded alarm
- DNR Director MacMullan took up



Rachel Carson



Ralph A.
MacMullan



Michigan Leads the Way



Michigan Leads the Way

- Michigan bans DDT in April 1969

Michigan Leads the Way

- Michigan bans DDT in April 1969
- \$335 million clean water bond, 1968

Michigan Leads the Way

- Michigan bans DDT in April 1969
- \$335 million clean water bond, 1968
- Environmental protection act, 1970

Michigan Leads the Way

- Michigan bans DDT in April 1969
- \$335 million clean water bond, 1968
- Environmental protection act, 1970
- Land trust fund, 1976

Rise of the Environmental

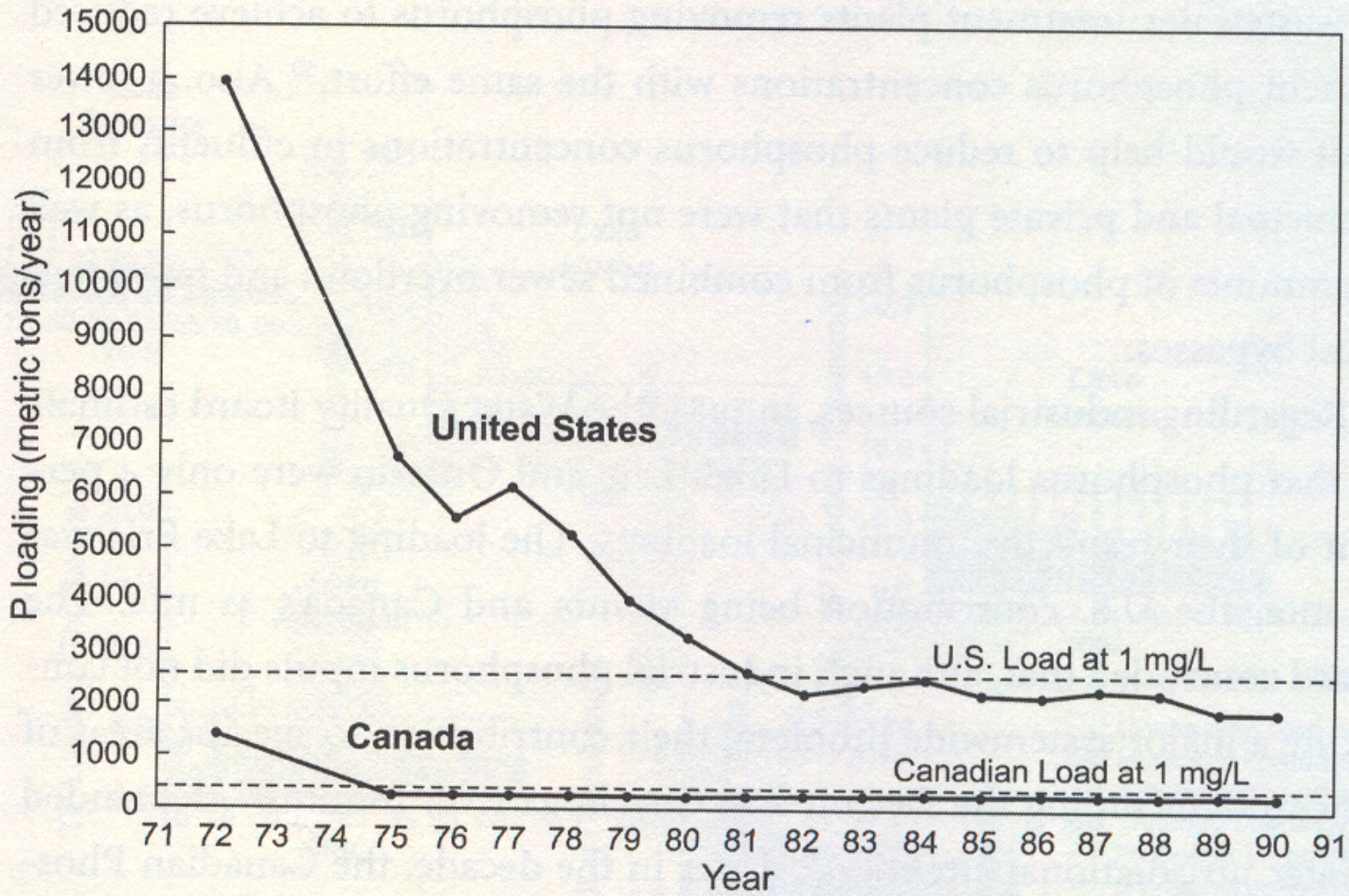


- Joan Wolfe organizes 1966 summit
- West Michigan Environmental Action Council (WMEAC) 1968
- MEC 1980

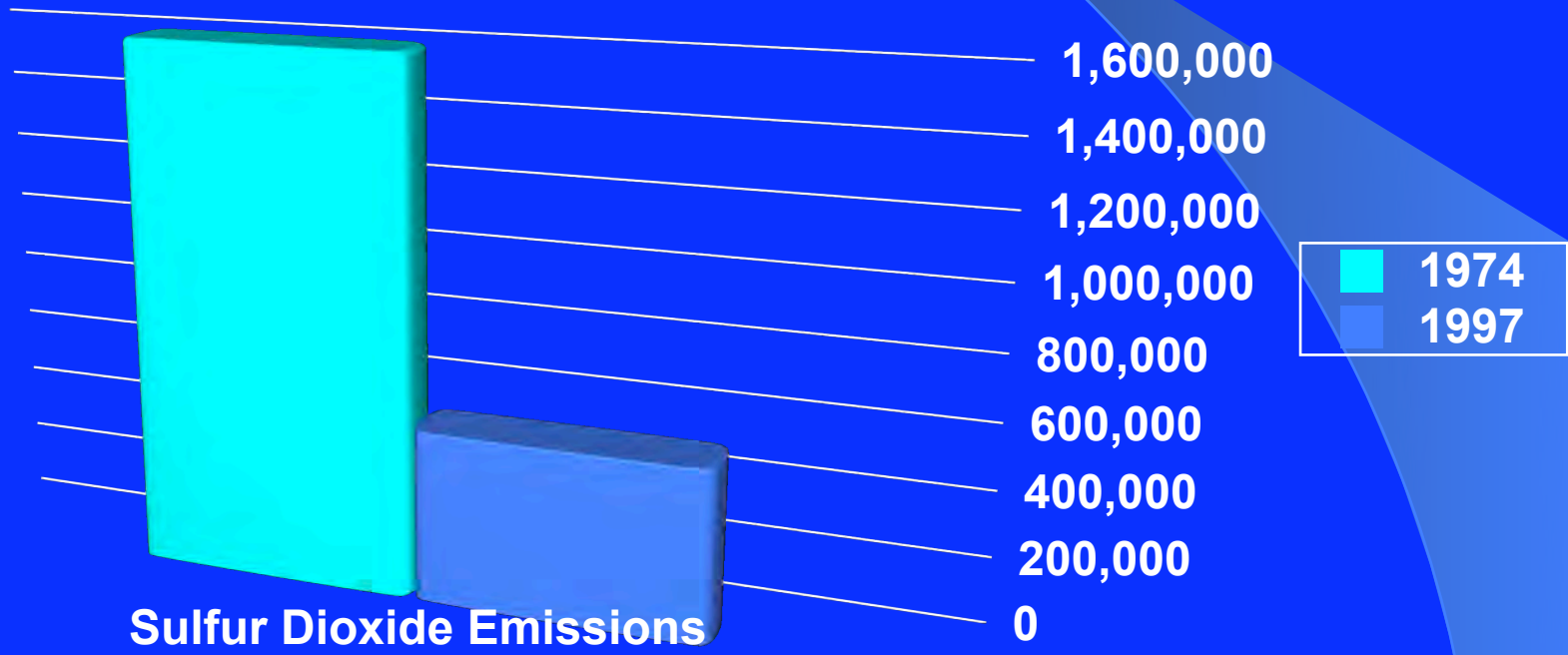


More Michigan Firsts (and Seconds)

- Lakes and streams protection, 1972
- Voters approve bottle deposit, 1976
- Control of phosphorus, 1977
- Wetland law, 1979



Air Cleanup

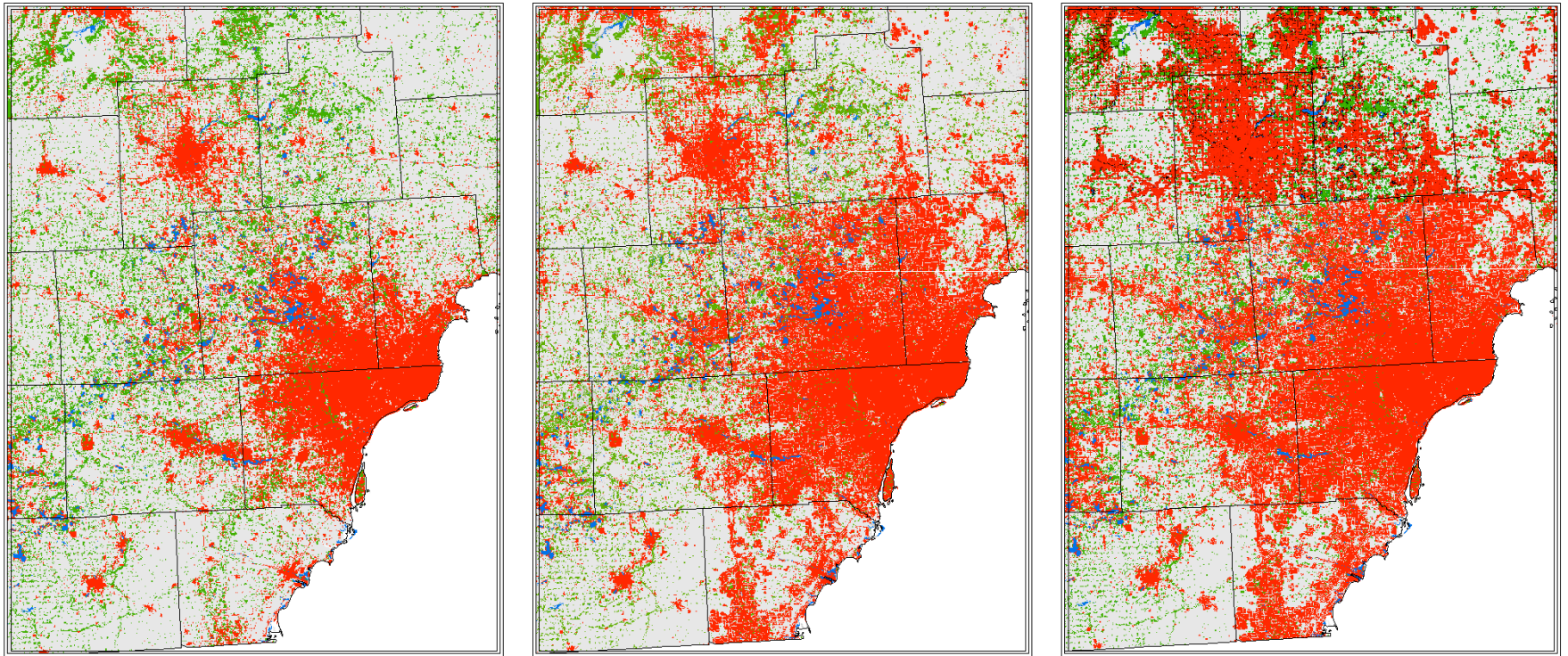


Wolf Population





Land Use from 1980-2040 in Southeast Michigan



The New Myth of Inexhaustibility



The New Myth of Inexhaustibility

The New Myth of Inexhaustibility

- Between 1990 and 2020, Michigan population will grow 11.8%

The New Myth of Inexhaustibility

- Between 1990 and 2020, Michigan population will grow 11.8%
- Urbanized land will grow between 63 and 87% (4–5 counties)

The New Myth of Inexhaustibility

- Between 1990 and 2020, Michigan population will grow 11.8%
- Urbanized land will grow between 63 and 87% (4–5 counties)
- State's vital industries, quality of life threatened



Great Lakes

The background is a solid blue color with a subtle gradient. A thin, light blue curved line starts from the top left and arcs across the upper portion of the slide. In the lower right quadrant, there is a light blue wedge-shaped area that tapers towards the bottom right corner.

Great Lakes

- 18% of world's surface freshwater

Great Lakes

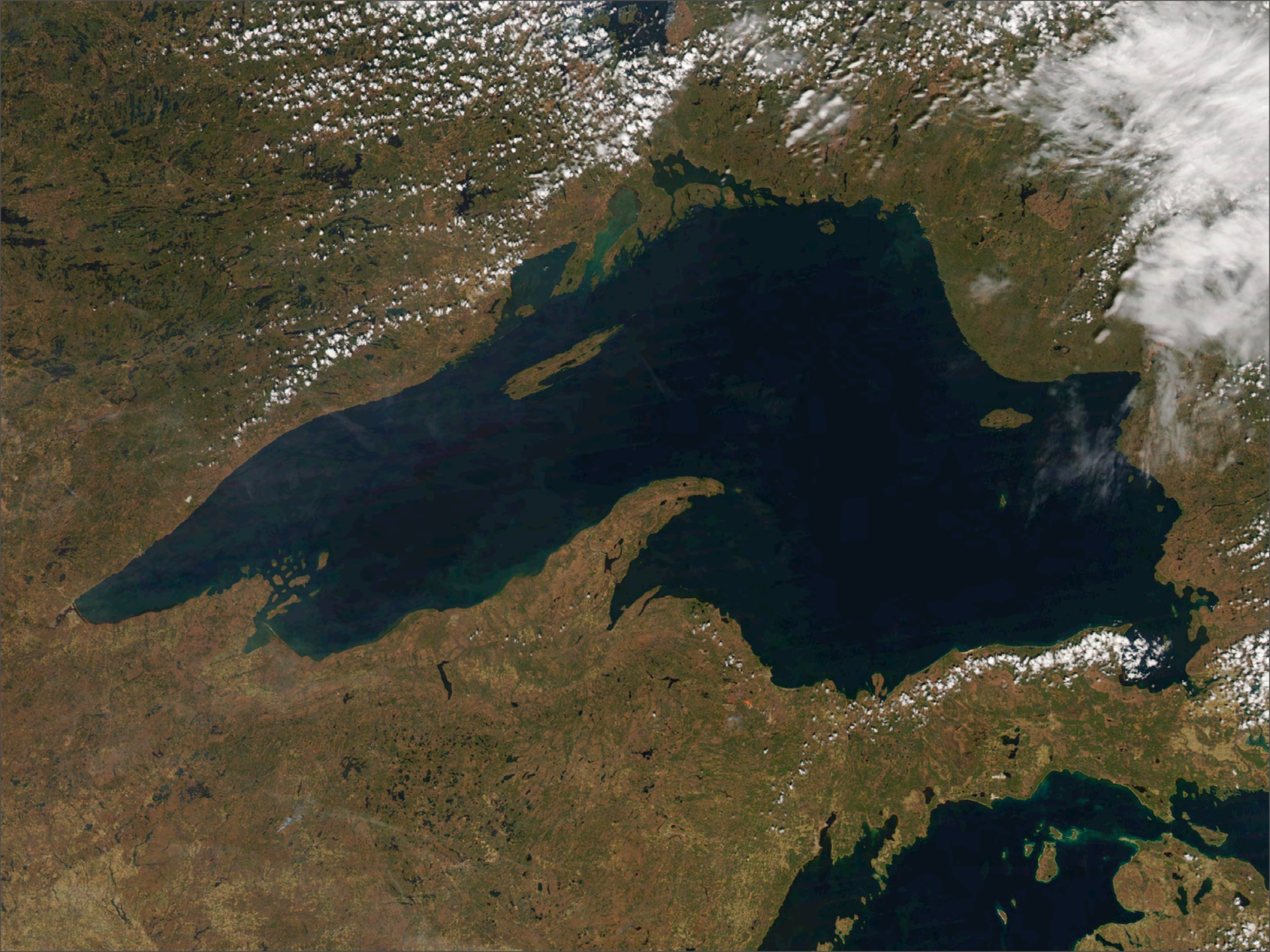
- 18% of world's surface freshwater
- 10% in Lake Superior *alone*

Great Lakes

- 18% of world's surface freshwater
- 10% in Lake Superior *alone*
- Enough to cover lower 48 to depth of 9.5'

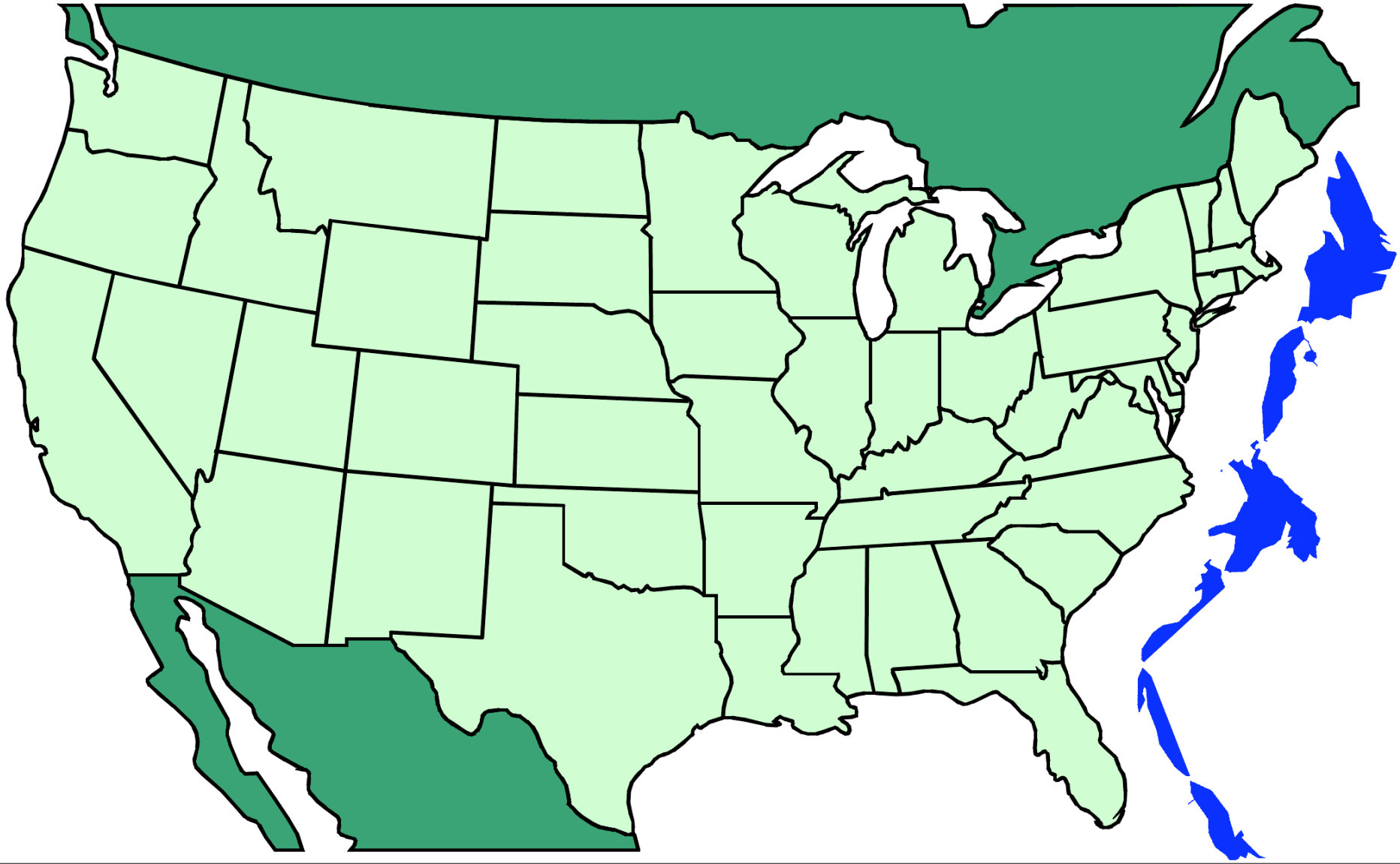
Great Lakes

- 18% of world's surface freshwater
- 10% in Lake Superior *alone*
- Enough to cover lower 48 to depth of 9.5'
- 3,288 miles of Great Lakes shoreline





Great Lakes Coastlines









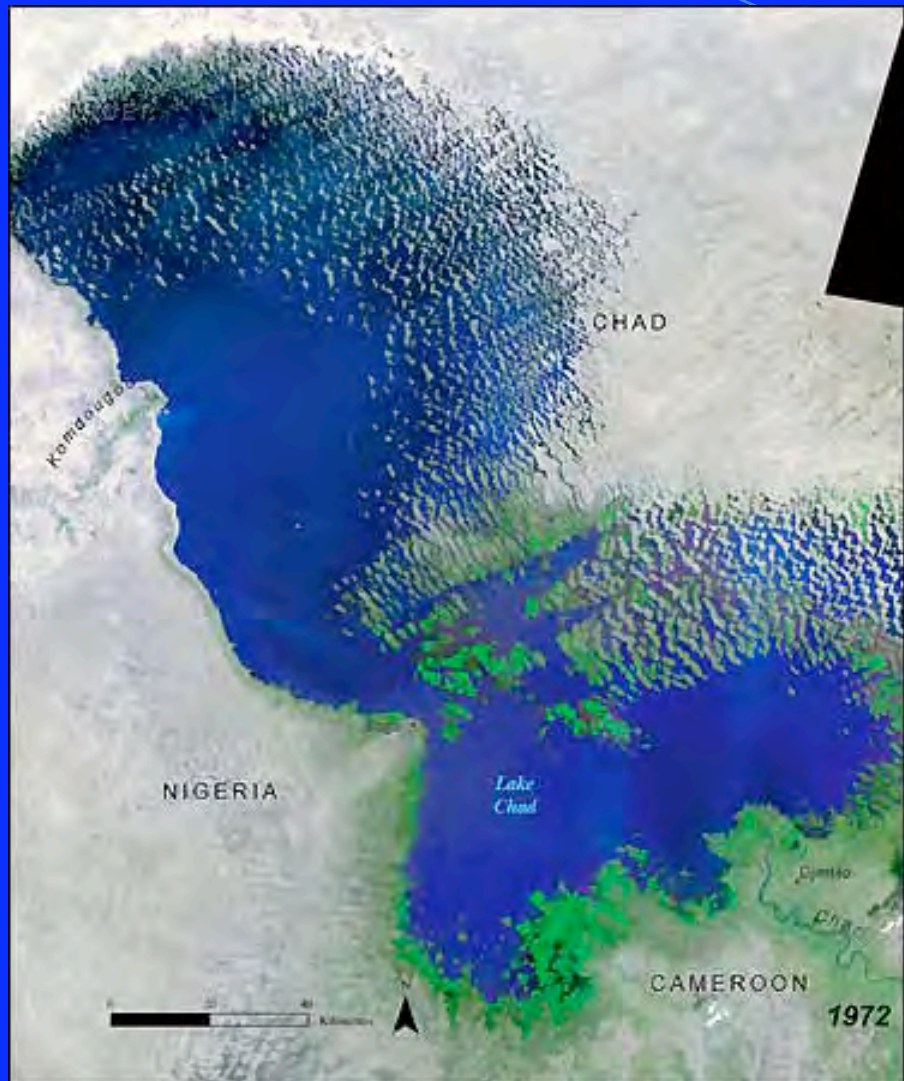
Michigan's "water park"

Michigan's "water park"

- State 22nd among 50 in land size
- But 11th when you add water surface
- Great Lakes area 38,192 sq. mi.
- "Public park" under law

You own it!

About Those Inexhaustible Waters...



Africa's Lake Chad

Africa's Lake Chad

- 15,000 square miles 40 years ago

Africa's Lake Chad

- 15,000 square miles 40 years ago
- 500 square miles today

Africa's Lake Chad

- 15,000 square miles 40 years ago
- 500 square miles today
- Factors:

Africa's Lake Chad

- 15,000 square miles 40 years ago
- 500 square miles today
- Factors:
 - Climate change (drought)

Africa's Lake Chad

- 15,000 square miles 40 years ago
- 500 square miles today
- Factors:
 - Climate change (drought)
 - Dams and diversions

“One hundred and fifty years ago we had a resource in the Great Lakes region that was considered inexhaustible. It lasted barely two generations. This was the White Pine forest. The White Pine of this century is Water.”

-- Frank Ettawageshik, Chairman, Little Traverse Bay Bands of Odawa Indians



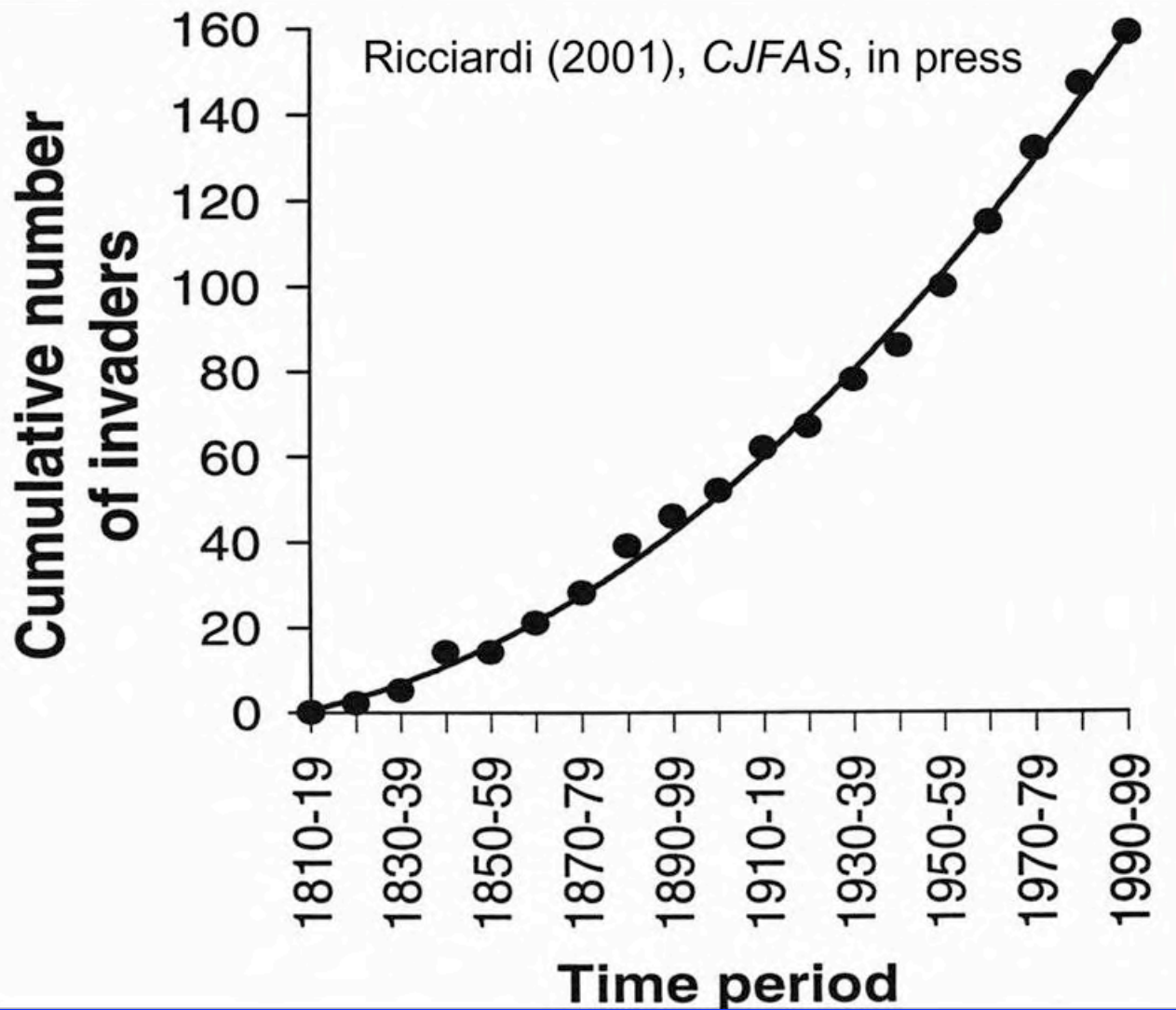
**BACK OFF
SUCKERS**
WATER DIVERSION . . . THE LAST STRAW

INFINITY

ES-1











Greening the Economy

- Energy policy
- Reform tax policy: promote clean production, punish pollution
- Green businesses
- Promote automobile industry conversion



What's Your Vision?

- What is your issue?
 - *Great Lakes*
 - *Forests*
 - *Green economy*
 - *All of the above and more*
- What is your vision?
- What will be your actions?

A Few Actions

The background is a solid blue color. A white arc starts from the top left and curves towards the right. A light blue, semi-transparent shape is positioned on the right side, overlapping the white arc and the blue background.

A Few Actions

- Low-phosphorus dishwashing detergent

A Few Actions

- Low-phosphorus dishwashing detergent
- Phosphorus-free lawn fertilizer

A Few Actions

- Low-phosphorus dishwashing detergent
- Phosphorus-free lawn fertilizer
- Turn off the lights!

A Few Actions

- Low-phosphorus dishwashing detergent
- Phosphorus-free lawn fertilizer
- Turn off the lights!
- Consolidate driving trips

A Few Actions

- Low-phosphorus dishwashing detergent
- Phosphorus-free lawn fertilizer
- Turn off the lights!
- Consolidate driving trips
- Conserve water

A Few Actions

- Low-phosphorus dishwashing detergent
- Phosphorus-free lawn fertilizer
- Turn off the lights!
- Consolidate driving trips
- Conserve water
- Get to know your legislator

The Only Inexhaustible Resource



The passion of Michigan's people for their environment from 1837 to the present

- **Dave Dempsey**
 - 517-402-1148
 - davedem@hotmail.com
- **MEC**
 - <http://www.mecprotects.org>
- **Clean Water Action**
 - www.cleanwater.org

